
Contents

Latest information.....	1
New functions	1
ML-32D / ML-16D Dante firmware.....	1
ML-32D / ML-16D Dante firmware update procedures.....	2
Checking the ML-32D / ML-16D Dante firmware version.....	2
ML-32D / ML-16D Dante firmware update procedures.....	2
Recovery procedures if a failure occurs during ML-32D / ML-16D Dante firmware update.....	4

Latest information

Always use the most recent firmware version for this unit. For information about the latest firmware, visit the TEAC Global Site (<http://teac-global.com/>).

New functions

ML-32D / ML-16D Dante firmware

V1.1.0.0 additions

- Dante Domain Manager is now supported.
In V1.1.0.0, the Dante module Software Version will be 1.1.0.0, and the firmware Version will be 1.1.0.0.
 Software Version: 1.1.0.0
 Firmware Version: 1.1.0.0

TASCAM ML-32D / ML-16D Release Notes

ML-32D / ML-16D Dante firmware update procedures

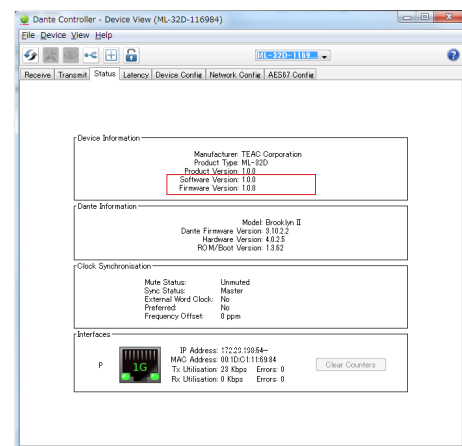
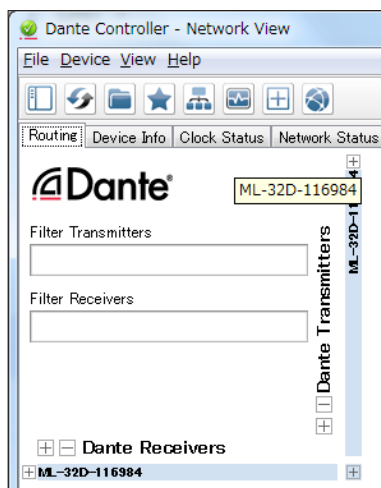
The firmware for the ML-32D / ML-16D Dante module installed in the unit can be updated using an application installed on a computer connected to the Primary network.

Please download the latest applications compatible with the computer operating system from the Audinate website links below and install them on the computer before starting the firmware update.

- Dante Firmware Update Manager
<https://www.audinate.com/products/firmware-update-manager>
- Dante Controller
<https://www.audinate.com/products/software/dante-controller>

Checking the ML-32D / ML-16D Dante firmware version

1. When Dante Controller is launched, the screen shown below will open.
The device name will appear if the computer and the Dante device are connected properly.
To check the version of a device, double-click its name.
2. Click the **Statuses** tab.
The version number is shown below framed in red ().
Updating is not necessary if the number shown here is the same or newer than the firmware version you intend to use for the update.



ML-32D / ML-16D Dante firmware update procedures

1. Download the latest firmware from the TEAC Global Site (<http://teac-global.com/>).
If the downloaded file is in ZIP format or another compressed file type, decompress it.
2. After downloading and decompressing the latest Dante update file (**ML-32D_V1.1.0.0.dnt** / **ML-16D_V1.1.0.0.dnt**), copy it to any directory.
(For example, copy it to the desktop.)
3. Confirm that the power is in off for the ML-32D / ML-16D.
4. Use a LAN cable to connect the computer Ethernet port and the ML-32D / ML-16D **Primary** connector.
5. Turn on the ML-32D / ML-16D.
6. Launch the **Dante Firmware Update Manager** installed on the computer.
After launching, the following screen will appear. Click the **Next** button.

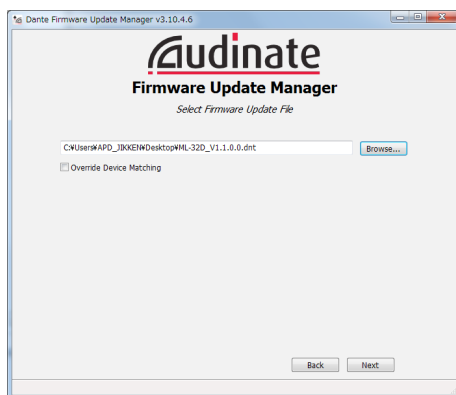


TASCAM ML-32D / ML-16D Release Notes

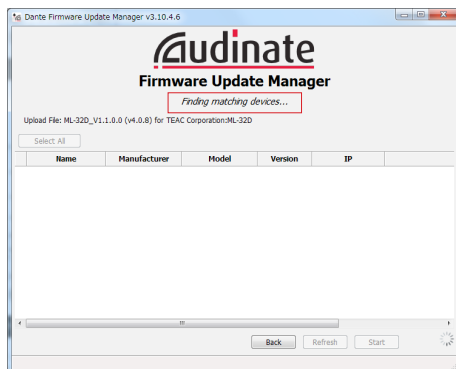
7. Click the **Update Dante Firmware** button.



8. Click the **Browse** button. Then, select and open the file copied in step 2.
Click the **Next** button.



9. When the following screen appears, if "**Finding matching devices...**" is shown in the area framed in red (), the application is looking for Dante devices that can be updated with the IF-DA64 Dante firmware selected in step 8. Wait while it does so.

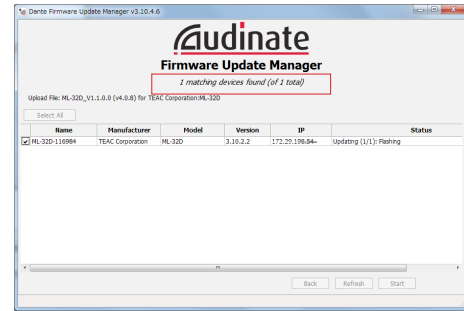


When the text framed in red () becomes "**XX matching devices found (of YY total)**", this shows the total number of devices connected to the same Dante network as the computer (YY) and how many can be updated (XX).

CAUTION

If the text framed in red () becomes "**No matching devices found (of YY total)**", confirm that the device you want to update is connected properly to the computer.

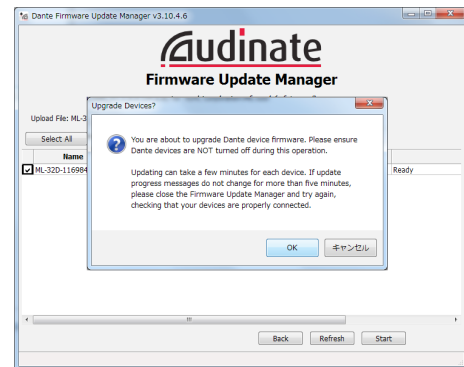
10. When the text framed in red () becomes "**XX matching devices found (of YY total)**", put a check (✓) next to the Dante device you want to update, and click the **Start** button.



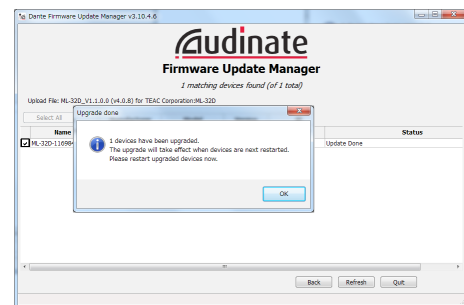
11. Click the **OK** button.

Clicking the **OK** button starts the IF-DA64 Dante firmware update.

Updating could take about 3–10 minutes, during which no progress may be visible at times.

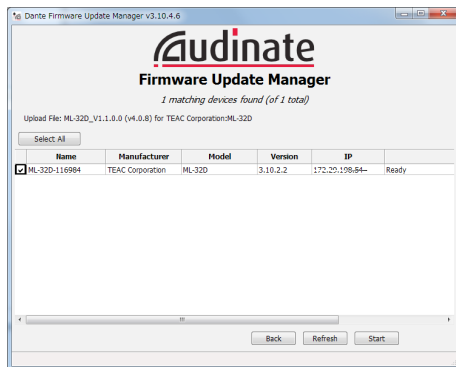


12. When the following pop-up message appears, click the **OK** button.

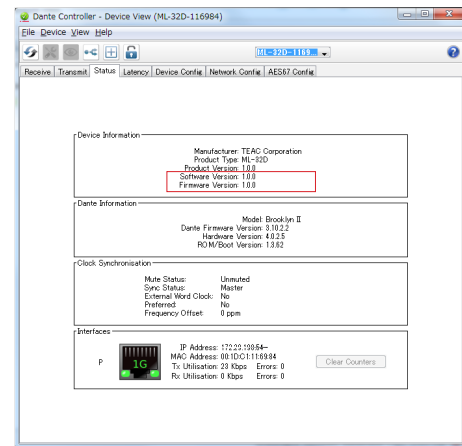


TASCAM ML-32D / ML-16D Release Notes

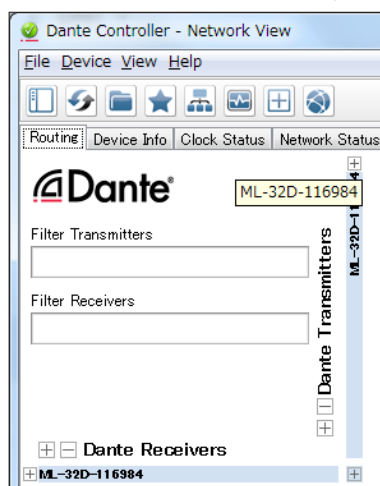
13. Click the **Quit** button to quit **Dante Firmware Update Manager**.



17. Click the **Status** tab, and confirm that the version numbers framed in red () are the latest, completing the update.



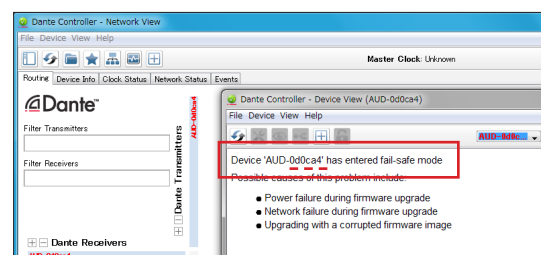
14. Put the ML-32D / ML-16D power into off, and wait about 10 seconds.
After waiting about 10 seconds, turn the ML-32D / ML-16D on.
15. Launch the Dante Controller application installed on the computer.
16. When Dante Controller is launched, the screen shown below will open.
The device name will appear if the computer and the Dante device are connected properly.
Double-click the name of the device that you just updated.



Recovery procedures if a failure occurs during ML-32D / ML-16D Dante firmware update

If an update fails while underway because, for example, the app was forcibly quit or the network connection was interrupted, the name of the device will appear red in Dante Controller to show that it is in fail-safe mode.
The following procedures must be conducted to recover.

1. Launch Dante Controller.
Double-click the name of the Dante device shown in red.
An indication like the one framed in red () shows that it is in fail-safe mode.
Make a note of the 6 alphanumeric characters (digits) indicated by dotted red lines (_ _ _ _ _).

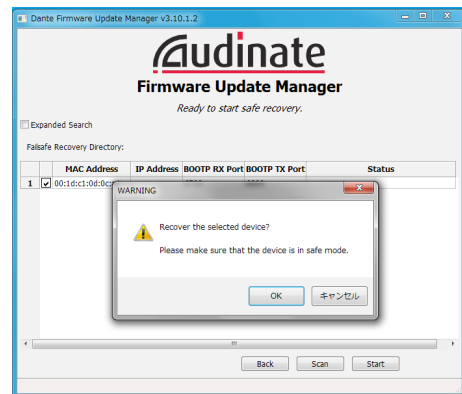


TASCAM ML-32D / ML-16D Release Notes

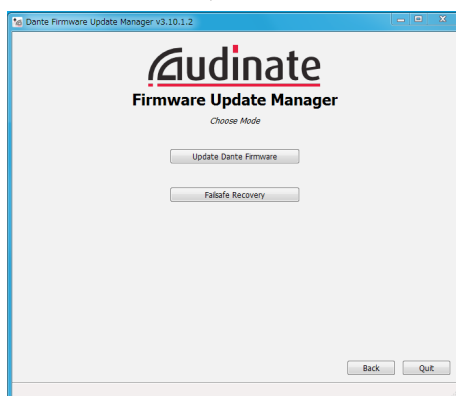
- Launch **Dante Firmware Update Manager**, and click the **Next** button.



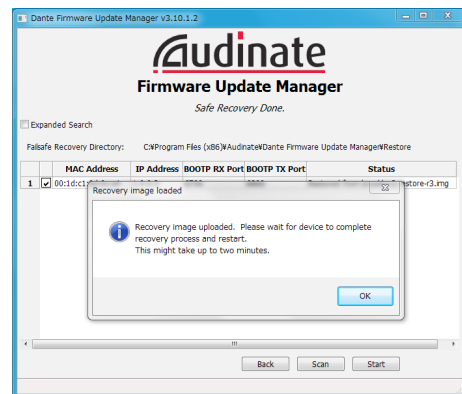
- Click the **OK** to start Recovery mode. Recovery mode could take about 3–10 minutes.



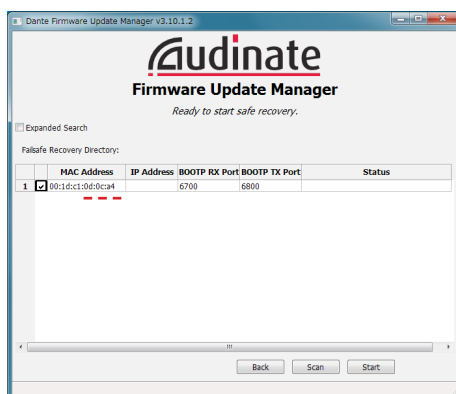
- Click the **Failsafe Recovery** button.



- Click the **OK** button. Put the ML-32D / ML-16D power into off, and wait about 10 seconds before turning it on again.



- If any devices in fail-safe mode are on the network, their Mac addresses will be shown after scanning. If the 6 alphanumeric characters (digits) that you made note of in step 1 match the 6 characters shown (_ _ _ _), put a check (✓) next to it and click the **Start** button.



- Launch Dante Controller, and confirm that the name of the updated device appears black, showing that it has been recovered.

